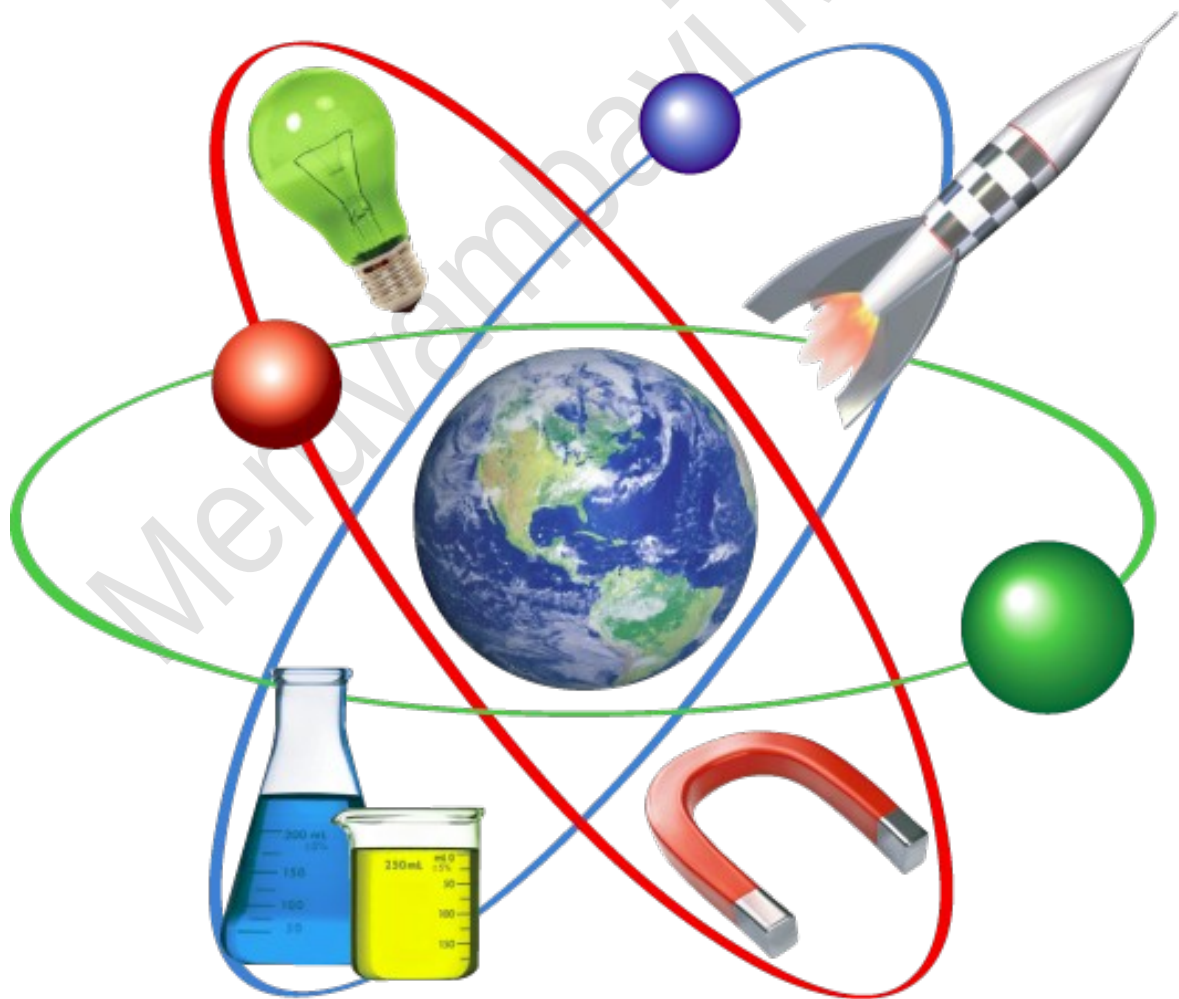


**MERUVAMBAYI. M. U. P. SCHOOL**  
**WORKSHEET – 1.8**

**Know The Plant World Closely**

30/07/20  
V Std



# Welcome to The World of Science



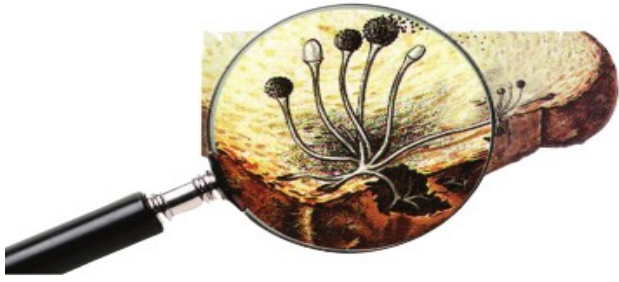
*In our previous class we have discussed about Semi parasites and Total parasites.*



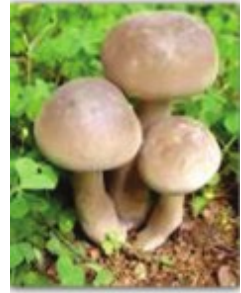
*Loranthus*



*Cuscuta*



Bread mould



Mushroom

*Plants which grow absorbing nutrients from decomposed matter. Such plants are known as **saprophytes**.*



Neottia



Monotropa

**Climbers** are weak-stemmed plants. They climb on other plants with the support of offspring-like parts called **tendrils**. Some plants have clinging roots for this purpose. Plants like pepper, bitter gourd and snake gourd are examples.



Weak-stemmed plants that grow creeping on the ground are called **creepers**. Sweet potato, hydrocotyle, strawberry etc. are examples. These plants do not possess tendrils or clinging roots.



## Activity 1

a. You know that mushroom do not have chlorophyll. Hence, cannot prepare own food.



*Then how does it get nutrients for the growth?*

.....

.....

*b. Have you seen fungus on bread or decayed food materials? In which group it belongs to?*



.....

## **Activity 2**

*Complete the table:*

<b>Group of Bitter gourd plant</b>	<b>Group of Mushroom</b>	<b>Group of hydrocotyle plant</b>
Snake gourd	Bread mould	Strawberry

*Go through the worksheet and write down the important points given. Do all the activities and send to me dears....*

***All The Best***